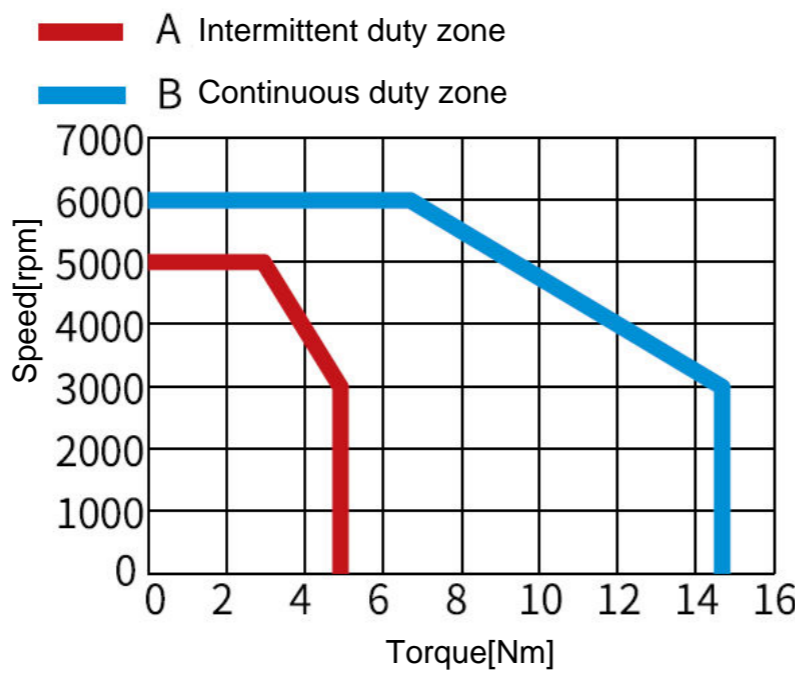
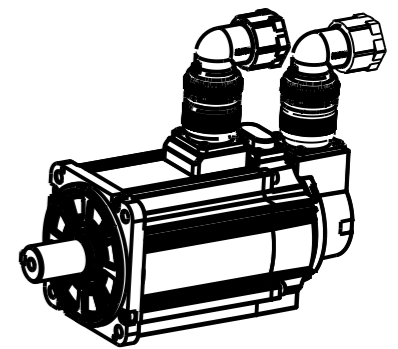
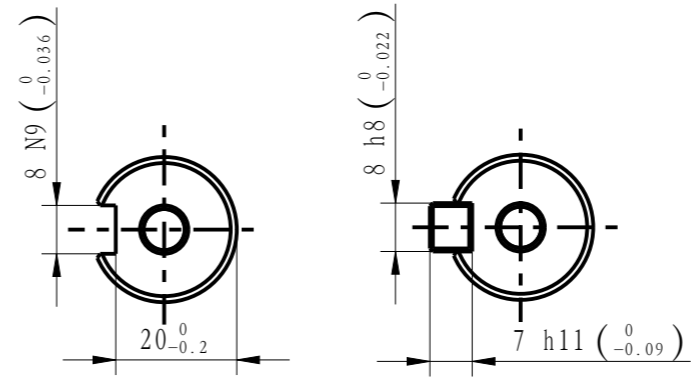
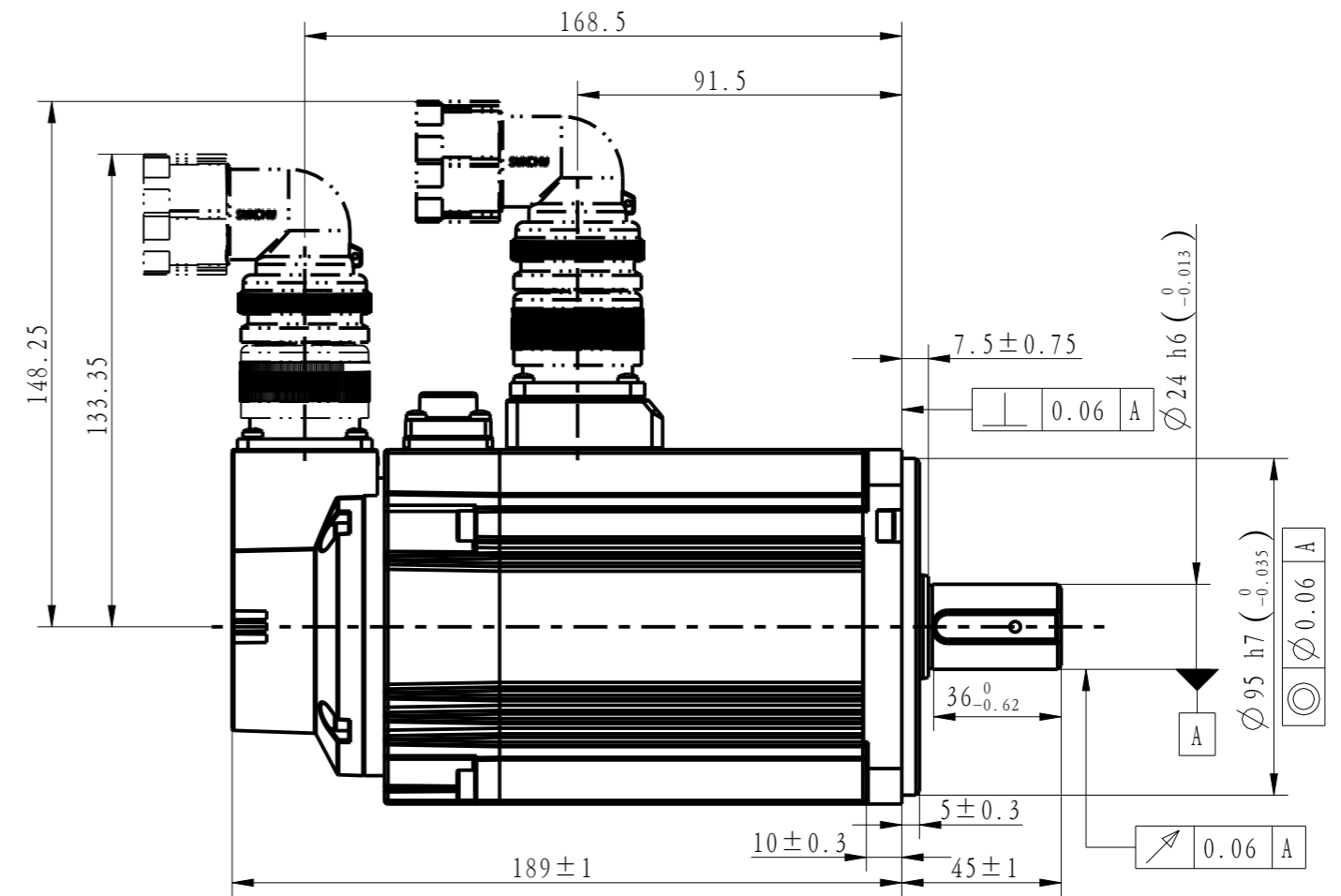
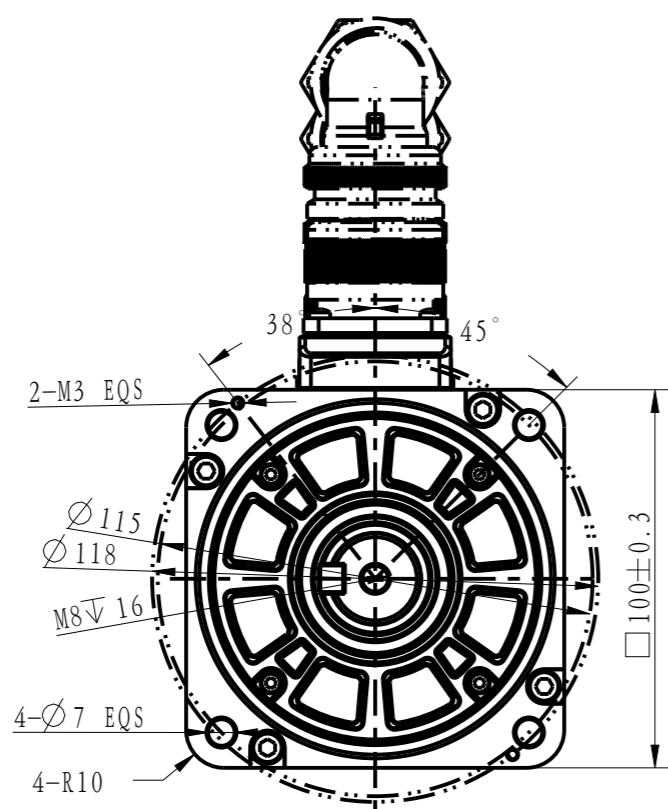



正样
2023.10.09
B00

外部公开



Basic function patmeters	
Rated power kW	1.5
Rated voltage V	380
Rated current A	≤4.2
Pea current at rated speed A	≤14
Rated torque Nm	4.9
Peak torque at rated speed Nm	14.7
Rated speed rpm	3000
Max speed rpm	6000
Rotor inertia kg*cm ²	3.17±10%
Encoder resolution	26bit
Insulation class	F
Protection level	IP67
Static torque of brake Nm	8
Brake power supply	QC24±10%
Duty cycle	S1
Radial line load N	≤686
Axial load N	≤196

				Motor outlin Drawing			01118137-WX	
B00	New Archive	/	20230911					
Version	Change method	Changed by	Date	/			Mark	 INOVANCE
Design	/							
Check	/							
Craft	/							
Verify	/			Weight	Scale	Version	Page 1 of 1	
stangardization	/			5.75kg	1:2	B00	Model	MS1H2-15C30CD-S634R-INT
Approve	/							